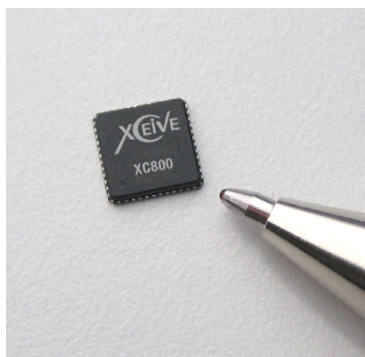




XC800 DVB-T COFDM Demodulator with XDDI™

XC800 DVB-T Demodulator for Seamless Integration with Xceive TV Tuners



OVERVIEW

The XC800 is a high-performance COFDM demodulator designed to complement Xceive's XC5000 and XC4300 silicon TV tuners for flat panel televisions and PC tuner products. The device replaces a conventional IF interface with a unique, dedicated Xceive Digital Direct Interface (XDDI) to Xceive silicon tuners. The XC800 eliminates the DAC/ADC in both tuner and demodulator, and simplifies hardware design because no AGC is required. As a result, the quantization noise normally introduced by ADC/DAC is also eliminated resulting in improved picture quality. Also, a complete tuner-demodulator solution from a single vendor assures compatibility and ease-of-design.

An XC800 paired with either the XC5000 or XC4300 is an optimized, complete global analog and DVB-T front-end system solution with the industry's best combination of performance, power consumption and small footprint. It is the ideal hybrid front-end solution for PCTV, iDTV, STB and PVR applications.

ADVANTAGES

Xceive Digital Direct Interface (XDDI) produces higher performance and simpler design (no ADC on chip)

Lower manufacturing costs through:

- Shared frequency clock with XC tuner requires no crystal
- Shared power supply requires no external regulator (XC4300)
- No external SAW required

Enhanced ease of use and complete RF front end system

One stop shopping for front end components simplifies ordering and support

FEATURES:

Fully compliant with these standards:

- ETSI ETS 300 744 DVB-T
- Nordig Unified 1.0.3
- DTG D-Book and E-Book

Fewer components - lower BOM costs

Simplified hardware design

Optimized receiver performance

Automatic channel interference suppression

Receives all modes of transmission: 2K, 4K, and 8K COFDM modes with 5, 6, 7, and 8Mhz channel bandwidths

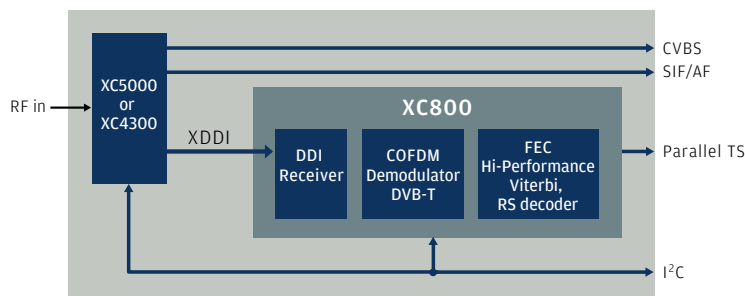
Active impulsive noise rejection

Low power consumption < 150mW

Easily monitors signal performance

Ultra small 48-pin QFN package, Leadfree

BLOCK DIAGRAM



XC800 DVB-T COFDM Demodulator with XDDI

DVB-T Demodulator for Seamless Integration with Xceive TV Tuners

DESIGN PACKAGES INCLUDE:

Ready-to-use schematics and PCB layout for easier hardware design

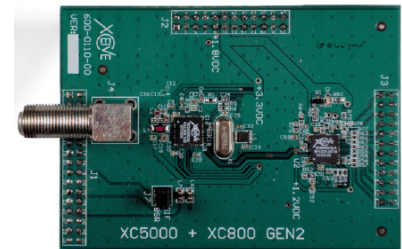
- No AGC needed
- Both the XC800 and Tuner utilize a single crystal

Firmware and C-code for programing the receivers

- Easy to use high level commands to control the receivers
- No AGC concerns in the system software
- Sample C-code examples provided to start the design

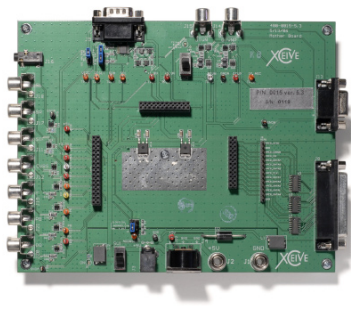
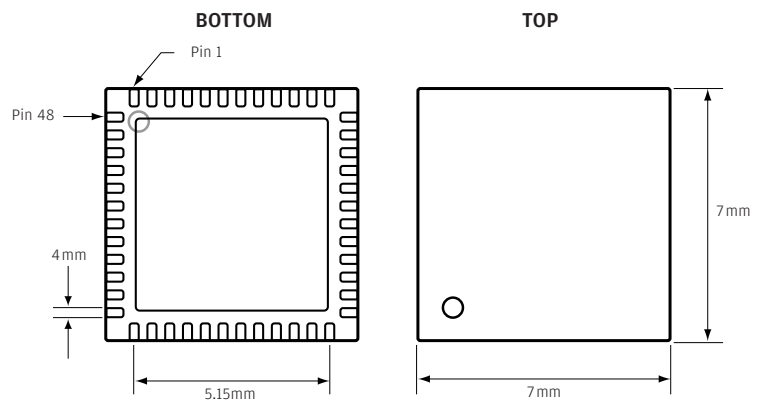
Available Now: Evaluation Kits with XC800+XC5000 and XC800+XC4300 for rapid development and testing with your DVB-T and Analog TV designs.

Xceive offers front-end design packages including hardware and software to shorten the design cycle and reduce time-to-market.



The package type is QFN48 (48 pins)

The thickness of the package is 0.8mm Minimum and 0.9mm Maximum.



EVALUATION BOARDS

Xceive makes available evaluation boards for select customers. Each evaluation kit contains a test module, detailed application notes to guide installation and software. To inquire about receiving evaluation boards, contact us at: sales@xceive.com



US Corporate Headquarters

3900 Freedom Circle, Suite 200
Santa Clara, CA 95054
Telephone: 408-486-5610
Sales: 408-486-5610 ext. 100
FAX: 408-486-5615
e-mail: sales@xceive.com